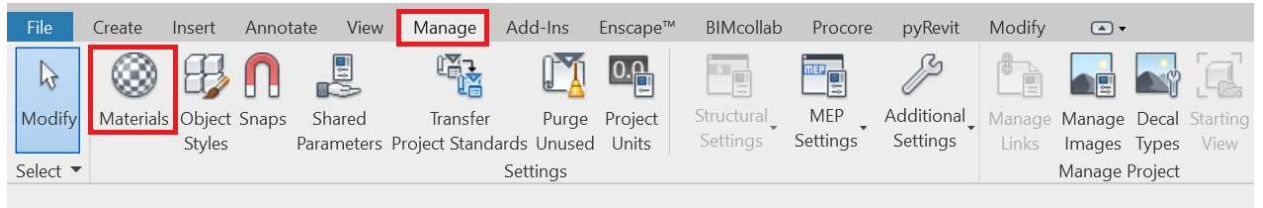
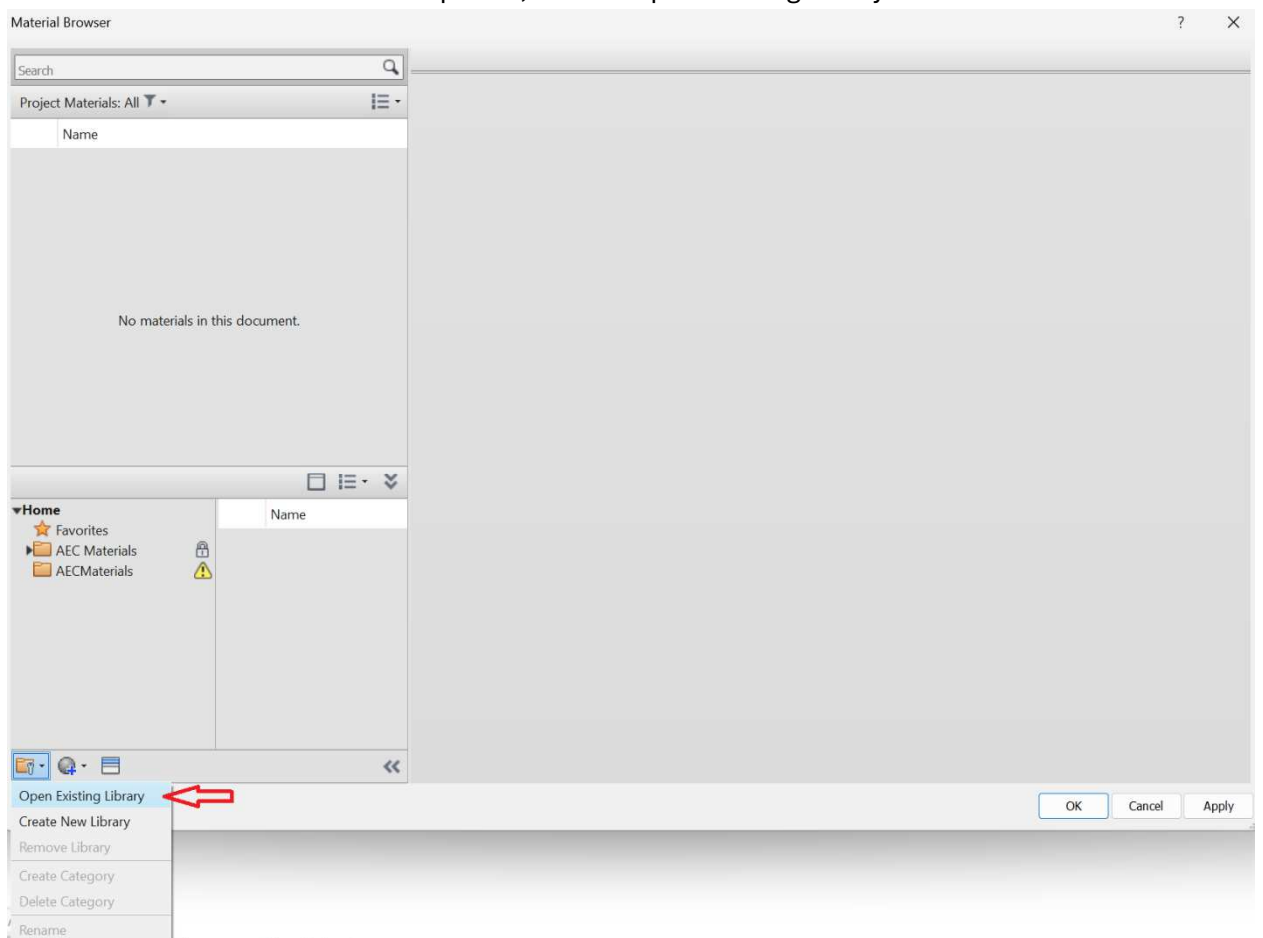


## HOW TO INSERT NORDIC MATERIAL

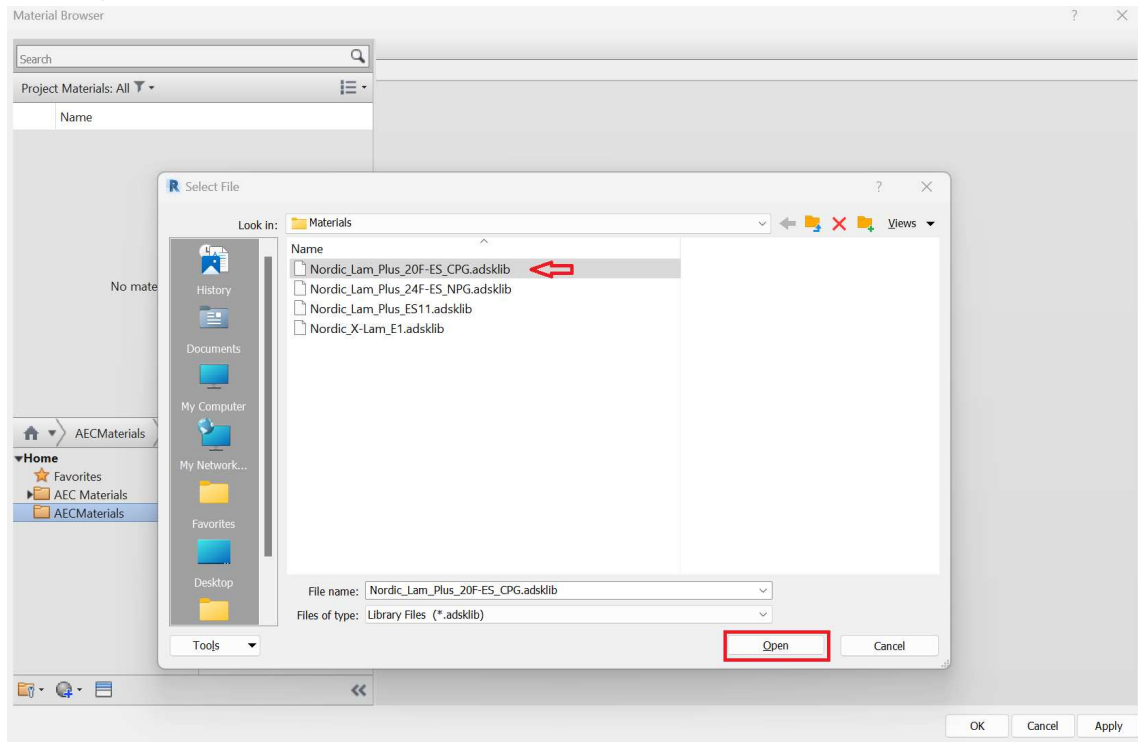
1. Open the revit family (.rfa) or project (.rvt) that you would like to insert the material into.
2. Go the Manage tab and select Materials.



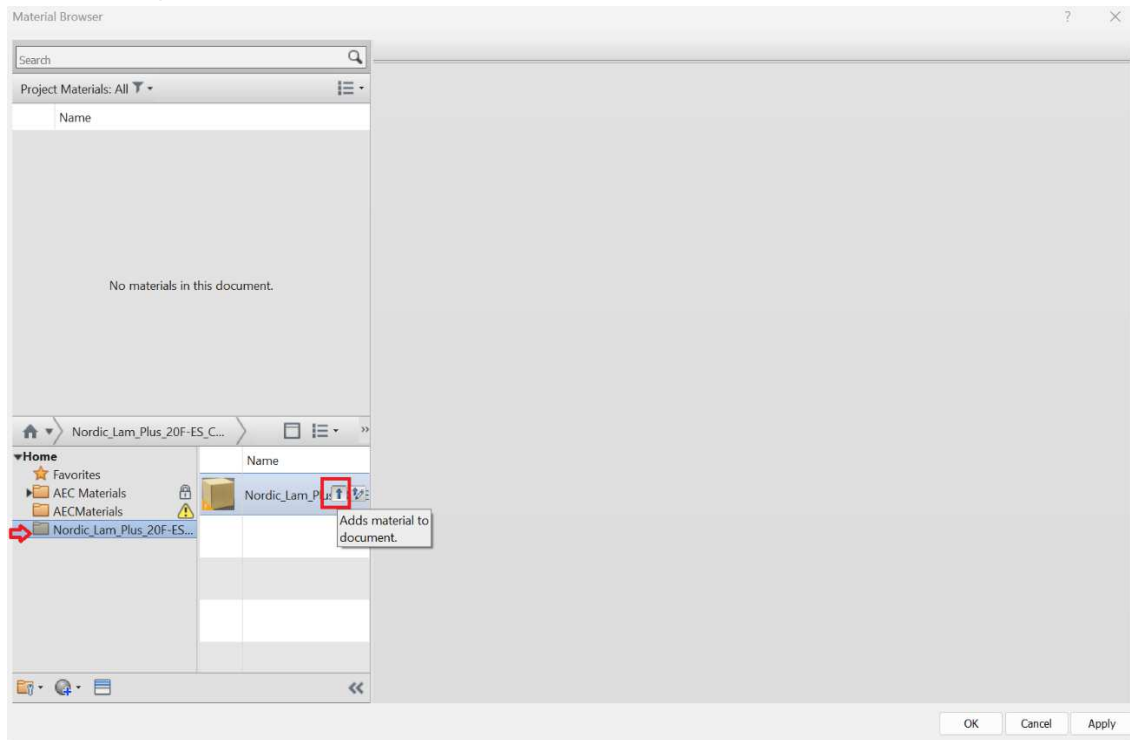
3. Once the materials window have opened, select “Open existing library”.



4. Choose the Nordic material family that you have downloaded from the website.  
Click Open



5. Select the uploaded file and click the icon with small arrow.



6. Once you have completed the first five instructions, you should see the “Nordic\_Material” in your materials list. Click OK to complete the material insertion.

